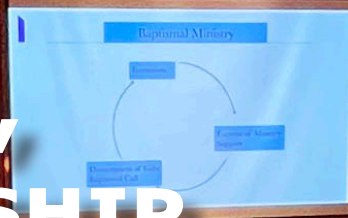




# Iowa Connections

SUMMER 2023  
VOLUME 10, NUMBER 1

**FUN,  
LEARNING,  
AND WORSHIP**



**Summer Ministry School & Retreat**

FROM BISHOP BETSEY MONNOT

# An Invitation to the Practice of Listening



It is a rainy afternoon as I sit down to write this article, and my son is at baseball practice. Today's practice was scheduled a few days ago, and this morning it looked like a beautiful day for baseball: clear skies, reasonable temperatures, ground relatively dry from a few rainless days. Then, as the time for the practice grew closer, the clouds began to roll in and some scattered drops began to fall.

I checked to see if there was an email from the coach, calling off the practice because of rain, but nothing was there. I kept checking until it got to be time to actually leave to go to practice: still no email calling it off, and the rain was only mild. As it turned out, only a few of the players showed up for practice, and the plan was primarily to spend time in the batting cage. Coach decided to go ahead with practice and if they end early, the players can text their parents and be picked up.

This is a very practical way of doing things. The rain is what it is, some of the players self-selected out of practice, whether due to rain or due to other commitments, and the coach and team are going to do what they can with what they have. It makes

me think of farming, because farmers are generally some of the most practical people I have ever met. Of course, our culture here in Iowa is deeply influenced by the practicality of farmers. I think this practical aspect of our collective personality is going to play an important role for our diocese as we move forward as church together.

It is a cliché to say that the reason we do things in our congregations is “because we’ve always done it that way.” We Episcopalians love our traditions, from the Sunday liturgy to the annual parish picnic or the rummage sale. We inherited these traditions and we want to pass them on.

Sometimes, even frequently, things don't work out the way we want them to. There aren't families with young children any more at the parish picnic, and those who come are getting too stiff in the joints to want to sit on the grass to eat. The army of volunteers who used to gather to sort items for the rummage sale has dwindled to only a few, and it is too much work for them. Even Sunday liturgy is different, missing

people who have never returned since COVID, providing for live-streaming, maybe with fewer Sundays when a priest is available to celebrate Eucharist.

This is the time when we need to combine practicality with tradition in order to be able to move forward. When the rain might have caused a cancellation of baseball practice, the coach assessed the players who showed up, the actual rain that was falling from the sky, and the original

intent of the practice, and decided to move forward under the changed conditions. When changes in our church communities, our neighborhoods, or our broader culture affect the way we've always done things, we need to take a good look at what the reality is that we are living in, understand whatever the changed conditions are, and decide how to move forward from there.

*continued on page 5*

---

**“As we deepen our connection to God, we get better at listening to God’s call and better at being open to receiving what God wants us to hear.”**

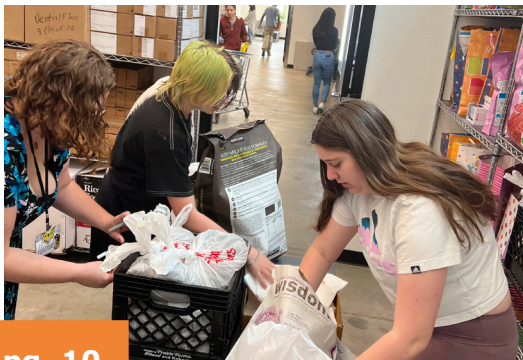
---

# In This Issue

IOWA CONNECTIONS | SUMMER 2023



pg. 6



pg. 10



pg. 12

- 2 An Invitation to the Practice of Listening
- 4 Our Diocese is SO MUCH FUN!
- 6 Agape Cafe Celebrates 30 Years of Serving Food with Dignity
- 8 Let's Talk About It: Mental Health, Illness, and Faith
- 10 Small Acts Create Big Impacts
- 12 The Life and Times of Calvary Episcopal Church
- 14 Summer Ministry School & Retreat
- 17 Religious Life: A Resource for All
- 20 GILEAD Grants Inspire Ministries
- 21 2022 GILEAD Grant Recipients
- 32 Diocesan Calendar Highlights
- 34 Stewardship Share

**ON THE COVER:** Breakout conversations during Bishop Betsey Monnot's gathering address at Summer Ministry School & Retreat 2022, Grinnell, IA. Photo by: T. Ruhland Petty

**IOWA CONNECTIONS** is a biannual publication of the Episcopal Diocese of Iowa.

**EDITOR:** Traci Ruhland Petty, Communications & GILEAD Missioner

**CONTACT US:** Episcopal Diocese of Iowa | 225 37th Street, Des Moines, IA 50312 | 515-277-6165 | [diocese@iowaepiscopal.org](mailto:diocese@iowaepiscopal.org)

**POSTMASTER:** Send change of address to: Iowa Connections, 225 37th Street, Des Moines, IA 50312 | [diocese@iowaepiscopal.org](mailto:diocese@iowaepiscopal.org). USPS 12106. Periodical Postage Paid in Des Moines, IA and additional mailing offices.

# Our Diocese is SO MUCH FUN!

by Ainsley

You may think that church is fun, but in our diocese, it's a whole new story. On a Saturday morning, my family picked up my cousin, Isabella, and our friend Ian and started driving to Boone, IA, for the big ski trip. I'm not a fan of skiing or long car rides, but I decided to go because I really wanted to be with my friends. When I got rolling down those hills with my friends, it was so much fun. After skiing all day, I was so tired and happy to be at St. John's by-the-Campus [in Ames, IA] where we could relax. We spent a night at the church, playing games and talking. It was so much fun!

When I woke up, all the breakfast was already made, and it was so good. Everyone helped cook and clean up after breakfast. I liked being in a different church.

I also talked to my friends about our summer camp, EPIC, where we spend nights in cabins and do fun activities. We go to the pool and lake, go hiking, and paint things! My favorite part about skiing and camping is making new friends. It's so much fun.

*Ainsley is a member at St. Andrew's, Des Moines.*





*Pg. 4 & 5 photos from the annual Youth Ski Trip, held February 2023. Photos by A. Mellies*

---

## From Bishop Betsey Monnot, *continued from pg.2*

Grounding ourselves in the reality that is around us is one way of listening: we gather the facts that we need about the conditions around us, and we listen to what those facts are telling us. Another way that we listen is by listening to God. As we deepen our connection to God, we get better at listening to God's call and better at being open to receiving what God wants us to hear. Both listening to the reality around us and listening to God are first steps to moving into the future as church together in this diocese.

When we have listened to reality and listened to God, it is time to put what we have heard into action. We listen in order to act; we discern God's call in our particular context in order to take a step forward into the future that God has in mind for us. We need to learn to do this through experiments, trying new things, and remembering that we can always change as we learn more. Today's baseball coach made a plan for the practice, and let the parents

know that they might receive a text to come and pick up their players early if conditions changed. When we try an experiment at church, we can be evaluating it as we go, making changes as needed, or even ending the experiment early if it turns out to be the equivalent of a downpour during baseball practice.

Then, when our experiment is ended, we have the opportunity to look at what we have learned, what worked, what didn't, and begin the cycle again by listening to the new reality that we have created as a result of our experiment. After practice today, the coach will have more information about the players and about the next steps that he can take to help them grow into the best team that they can be. This is the way God calls us, one step at a time, into the future. We don't have to know the whole path, or even where exactly we are going. We just need to listen to God and to the reality around us, and then take the step that God shows us.

# Agape Cafe Celebrates 30 Years of Serving Food with Dignity

by Judith Crossett

If it's Wednesday, the Agape Café is open in Iowa City—and now the café can say that year-round; this year we expanded to serve hot, made-to-order, free-to-anyone breakfast January through December. The café is located inside of Old Brick—originally a Presbyterian Church, the building is now a historic landmark serving as a community gathering space and home for various non-profit organizations.

What do you see when you walk into Old Brick? A large, high-ceilinged, wood-floored room with tall windows—a reminder of the building's many lives, including serving as a church. There are round tables seating 4 to 6 people each, with place settings, condiments, flowers, and a menu. Rather than using disposable items (like paper plates and plastic cutlery), the café's set-up mirrors a restaurant setting by using tablecloths, cloth napkins, and reusable eating utensils, inviting people to sit, be un-hurried, and reminded that this is not a one-time offering. The hospitable setting embodies the motto of Agape Café: "good food served with kindness"—and as much dignity as possible.

Sit at one of these welcoming tables and enjoy delicious, organic coffee; give your order to one of the volunteer waitstaff who come ask what you'd like to eat. What's for breakfast? Eggs, any style, with cheese if you like; bacon and sausage, home fries, grits, oatmeal, a fruit cup, toast (white or whole wheat), orange juice, and milk. A weekly special is listed on a prominently-displayed board: pancakes, French toast, biscuits and gravy, breakfast casserole, are a few examples. The café doesn't limit how much food a guest may order (except for the meat), so some very full plates are served and enjoyed.



Volunteers are the driving force and heart of the café. One loyal volunteer family has laundered all the linens for the café every week since the Café opened, thirty years ago. Volunteers set up tables; put out syrup, salt, pepper, packets of butter and jelly; keep the coffee flowing (and will bring guests coffee refills). Volunteers bring out high chairs for very small guests, and find child-sized glasses of milk or juice. Tuesday afternoons, volunteers are doing prep work—peeling and chopping potatoes and whatever else is needed ahead of the Wednesday breakfast.

---

**"The hospitable setting embodies the motto of Agape Café: 'good food served with kindness'—and as much dignity as possible."**

---

Other services have been added to the café to provide needed resources for guests: student nurses run a wellness table with blood pressure checks, advice on health matters, sometimes a foot clinic. And a grocery table offers foods that can be bagged and taken for later—fruit, breads, boxed and bagged sandwiches and salads, and other foods as available.

Agape Café was begun as a ministry of the University of Iowa Episcopal Chaplaincy; it remains a ministry of the Episcopal Diocese of Iowa and continues to draw students to its volunteer pool of waitstaff, prep cooks, and clean-up crew. The pandemic



**(A)** Nursing students serving breakfast;  
**(B)** Helping at the grocery table; **(C)**  
 Prepping potatoes; Photos from J.  
 Crossett



brought a brief hiatus in service, but the café figured out how to do grab-and-go meals as well as provide hot breakfasts to the city’s day warming shelter. Once the café reopened, the success of the to-go-only service resulted in offering both sit-down meals and boxed meals to go. The café serves increasing numbers of both, often approaching 100 meals served in the hour and a half (7:00 am to 9:30 am) orders are taken. Guests are free to sit and rest and visit until it’s clean-up time so that Old Brick, which has hosted the Café from the beginning, can be ready for the next group to use the space.

Agape Café builds community; it is a community of people who are lonely, people who are hungry, people who appreciate and share kindness and dignity, people who enjoy a place to eat at leisure with friends. It’s also a community of volunteers who’ve come, some for years, and who sit to eat together after the guests have left.

But just as much as Agape Café depends on guests and volunteers, it depends on generosity. The diocesan office extends its insurance coverage, manages payroll, accepts donations, and holds any reserve funds we have. Table to Table, HACAP, and many other agencies provide food for free or at reduced cost. Several churches in Johnson County of many denominations support the café. The café has successfully applied for grants from church-based outreach funds, some government sources, and keeps looking to other sources. But—as everyone who shops for family groceries knows—the price of food, by far the largest item in the café budget—continues to rise. Total annual expenses (food, salary, supplies) are about \$30,000, and the café isn’t there yet this year. We hope you’ll consider making a donation to Agape Café. Your donation not only helps keep the café open, but ensures that dignity and hospitality are on-the-menu for all guests, no matter their circumstances. The generosity of volunteers and donors like you sustain this life-giving community, and we hope you’ll consider a gift so we can continue to serve good food, with kindness, for many years to come.

*The Ven. Judith Crossett serves as archdeacon for the diocese and as a deacon at Trinity Church, Iowa City.*

Learn more and/or make a donation:  
[agapecafe.org/](http://agapecafe.org/)



QR Code How-To: open the camera app on your phone, hold your phone over the QR code on the right so you can see it in your camera’s viewfinder, then click on the notification that pops up

# Let's Talk About It: Mental Health, Illness, and Faith

by Kris Leaman

Mental health impacts almost everyone in some way, yet it can be a topic we, as individuals and churches, shy away from discussing openly. We may be afraid that people will see or treat us differently if they know that we, or a family member, are struggling with our mental health; we may feel like we do not know what to say to someone who is struggling or experiencing a crisis, and we fear making the situation worse; we may feel shame at our own struggle, or maybe we just don't know how to talk about it. Removing the stigma of shame around mental health, which includes increasing awareness, is an on-going process we believe churches and Christians are called to participate in. To support this we, the

that base each session was built on the previous week, and Biblical references supported each topic. David also gave great examples from his own experience in coming alongside families, school districts, and the youth he shepherds.

As participants, we were challenged to be “noticers,” like Jesus saw those who were overlooked or ignored. We learned examples of what to look and listen for from people who may be experiencing or navigating a mental health challenge. We were challenged to listen—listen to the person and sit with them in the discomfort rather

People decide if it's safe [to talk to us] by watching our actions and overhearing our conversations.

Behavioral Health Ministries Team (BHMT), hosted a Lenten study focused on mental health and the Bible.

The Behavioral Health Ministries Team brought in David Galvan of Colorado Springs, Colorado to present on the topics of mental health and the Bible over four Wednesdays in Lent. David is a speaker, trainer, and educator who tackles the tough subjects of suicide in our youth as well as other serious mental health issues. He is called in to facilitate conversations and workshops about mental health in an effort to increase awareness and decrease stigma around mental health. He is also called in when tragedies occur, to assist with the trauma and grief a community is experiencing.

We met weekly online using Zoom and each topic invited rich conversation. We started with establishing a “base” of understanding of what mental illness is. From

*Oh God, our liberation and shalom, we seek the power of your Spirit, that we may live in fuller union with you, ourselves, and our sisters and brothers with mental illness. Also grant that we may gain courage to love and understand each other. Amen.*

*Prayer for Mental Illness, Recovery, and Understanding from the National Alliance on Mental Illness*



than script an immediate response to their distress—walk with them through the valley instead of telling them how to get out of it. We were encouraged to be a resource—to be someone who is prepared to notice, listen, and sit with others as they share their story. Finally, we talked about the impact on survivors who are left behind by a family member or friend who died by suicide. There was a deep discussion about the importance of being open to conversation, listening to those folks who may be contemplating suicide, and taking care of people grieving from a completed suicide. Our time together yielded thoughtful, difficult, and fruitful conversations, and we hope that all who participated feel supported and encouraged to share their own story and to listen to the stories of others.

*The Rev. Kris Leaman serves as rector at St. Mark's, Fort Dodge.*

# 988 SUICIDE & CRISIS LIFELINE

No matter where you live in the U.S.,  
you can easily access 24/7 emotional support.

Call or text 988 or visit [988lifeline.org/chat](https://988lifeline.org/chat) to  
chat with a caring counselor.

We're here for you.



## Congratulations Bishop Scarfe!

Born in England, the Ninth Bishop of Iowa, the Rt. Rev. Alan Scarfe took the oath of allegiance to become a naturalized U.S. citizen, as part of a naturalization ceremony held Friday morning April 14th, at the Central Branch of the Des Moines Public Library. We wish Bishop Scarfe a heartfelt congratulations on this momentous occasion!

*Photos from Scarfe's naturalization ceremony. (R) the Rt. Rev. Alan Scarfe with his wife Ms. Donna Scarfe; (Bottom R) L to R: the Rev. Lizzie Gillman, the Rev. Kathleen Milligan, the Rev. Jean McCarthy, the Rt. Rev. Alan Scarfe, Canon Julianne Allaway, the Rev. Mike McCarthy, Mr. Ben Allaway*



# Small Acts Create Big Impacts

by John Greve



We were really happy to have the group of junior high youth with us [at Grace Episcopal Church, Cedar Rapids] as they engaged in a “Small Acts, Big Impact” gathering. They are from one side of this diocese to the other.

It was a day full of doing things for others, and it didn't take much time to do any of the tasks, partly because they were really enthusiastic. After everyone arrived, they went to visit the brand-new Coralville Food Pantry facility and to help bag groceries to be distributed the following week. They also bagged dog food for the pantry's clientele to feed to their pets. In doing this, they helped to feed fifty families. After that, they went shopping to make themed May baskets that were auctioned at Christ Church [Cedar Rapids] in a fundraiser for our companion diocese of Swaziland. Paula Sanchini from Christ Church came and talked about our relationship with our companion diocese of Swaziland. Then, they learned about the medical lending closet and helped to sort a lot of supplies in no time flat that will help dozens of people to heal and get better. At some point in all that, they worked on blankets to be given away.

---

**"When people feel loved, they never feel alone. That is a big impact you can make every single day."**

---

Each task done was a small act in itself. Small acts that will reach far beyond their circle of friends or their church, whose impacts they will never fully know. Well done, my young friends! I wish they could see the faces of those whom they are helping with those small acts. I know what it means to those they have served anonymously, because I used to work at the pantry and I do work at

the medical lending closet, and most people are truly grateful. But the best part of all is that for a moment, we become community with each other. We can best follow Jesus when we remember that we are all part of the same community, the same flock. He invites us to follow him and listen for his voice in everything we do. When we realize that we all belong together in the flock, that we all need the same care, that we all are meant to be together no matter what

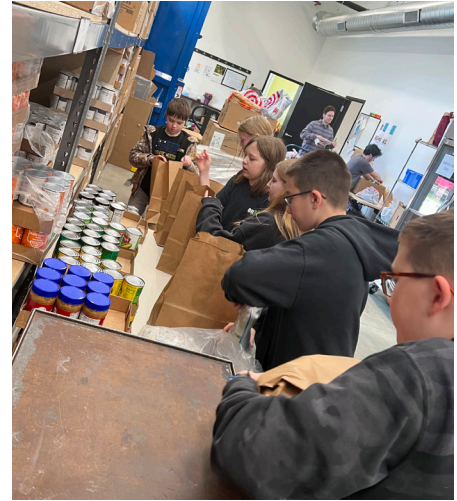
we look like, then we will know the amazing abundance that comes from God.

Someone once used the words in a prayer asking God to teach us the difference between reaching down and reaching out. Reaching down to someone means that you consider yourself to be above them. Reaching out

means you are equals and companions in life. So, as we seek to do small acts of kindness, let's remember to reach out. I also hope we all remember that we don't have to do something incredible to make a real difference to someone who is struggling in one way or another. When people feel loved, they never feel alone. That is a big impact you can make every single day.

If we keep finding ways to do even the smallest acts to help others, we can come just a little bit closer to the beloved community that is the kingdom of heaven. We are all God's beloved—every single one of us. God's love is limitless. Let's do our best to imitate it and spread it as far as we can!

*The Rev. John Greve serves as rector at Grace Church, Cedar Rapids.*



Fall Joint Chapter Meeting  
*Save the Date*  
August 26, 2023  
10am - Noon on Zoom

The diocese is arranged into 10 mission chapters, with every congregation being part of a chapter. We meet twice yearly in a joint chapter meeting online via Zoom, usually in the spring and fall.

All chapters meet together in the first part of the meeting where information shared from designated speakers, and the second part of the meeting is when individual chapters meet in breakout rooms for more localized discussion.

Not sure what chapter you're in? Visit: [iowaepiscopal.org/governance/#Chapters](https://iowaepiscopal.org/governance/#Chapters)



# The Life and Times of Calvary Episcopal Church

by Suzanne M. (Houts) Berry

My family, in which I was the oldest child out of eight, joined Calvary Episcopal Church in Sioux City in 1959. All born and raised Episcopalians, we came to Sioux City from Grace Episcopal Church in Estherville where I was born. At Calvary, faith was very strong, families were growing, and so was their dedication to the welfare of the church and its people. There were always luncheons for social hour at church and also at people's homes. We had many outreach activities, such as Shrove Tuesday, spaghetti dinners, pork chop suppers. We volunteered to help at the soup kitchen, and plant sales were one of our best fundraisers for our outreach program. Thinking back, vacation bible school was held together with Calvary and St. Thomas'. Our community bloomed with the help of God and his servants.

Many families donated items and contributed to Calvary's growth, and I would like to name some of them, as far as I can remember: the Kelly Houts family (my family)

gave the lighted sign to the church after my mother passed as a memory of her love and devotion to Calvary Episcopal Church. Penny Burns, Father Cowling and his wife created a choir. Pat and Vern Roberts were the last wedding in the old church. Dean and Sandy Shroll and family began our outreach program in 1994. Dan and Kay Pecaut and family. Ceil Knapp, Bob Fletcher and Charlie Kruse built the free-standing altar. Chuck and Dee Randall gave round tables for coffee time and replaced chairs with pews in the sanctuary in 1996. The Hildebrands presented the gift of Bibles in every pew. Jean Culver and family headed the CROP walk. Kay Pecaut and Ronda spent lots of hours painting and sprucing up the church. Mabel's Kitchen: a project done by Dee and Chuck Randall and Dick Pecaut with generous gifts from Mabel Larsen and others (labor was done by Harland VanVaulkingburg). Mabel was the hostess of coffee hour after church and also supplied flowers from her garden on the altar for many years. And there are so

---

The building is now ready for a new life, making a way to serve those seeking a new culture. God remains.

---

- Deacon Pat Roberts

---



*Calvary's secularizing a consecrated building service. L to R (Front): Sue Berry, Karen Mackey, Rene Eastham, Kelly Houts; (Back): Toby Varvais, Deacon Pat Roberts, Rikki Robinson, Patty Houts, Rev. Stacey Gerhart, Amilcar Olivarez, Greg Jones; Photo from S. Berry*

many more families not named here that shared God's love through working together as one.

I remember good food and great cooks; the sacredness of the altar guild, who wore white gloves when handling the vessels. There were girls becoming acolytes, and women becoming priests. I remember everyone dressed up on Sundays—my brothers wore suspenders and bow ties, the girls wore dresses with white veils on our heads, and my mom wore a brown hat with a veil over her forehead. There were two services and Sunday school was downstairs. When it was time for the children to dismiss and join their parents in church, the bell rang. The bell is still there today.

I was commissioned into the ministry development team about seven years ago, and many changes have taken place more recently. Our previous leader retired, our diocese transitioned to a new bishop, and our church accepted a merging with St. Thomas' Episcopal Church, also in Sioux City. Our purpose in this transition is to be faithful servants in the house of the Lord forever. As we combined with St. Thomas', it was time to secularize (or de-consecrate) Calvary's building. This process involved removing sacramental items, like the altar and baptismal font, and concluded with a liturgical service for this purpose.

On February 23, 2023 at Calvary Episcopal Church, 1308 South Cleveland in Sioux City, Iowa, we held the service for secularizing a consecrated building; it was a mission to be accomplished by many people to serve the Lord as one, and a declaration that I will only see this once in my lifetime. Walking through the big red door with my dad on one arm to say goodbye to the church that raised a lot of families, including ours, was a memorable experience. Seeing so many things gone, surrounded by the few remaining members as we closed this chapter of the church and our lives elicited strong emotions—there were tears shed, and many held mixed feelings. There were no words to adequately describe the personal nature of this beautiful service and the atmosphere surrounding all of us. The Reverend Stacey Gerhart and Deacon Pat Roberts were outstanding in

their appreciative hearts of all of us attending this sacred day of secularizing this consecrated building.

This transition is a chance to grow and for changes to be made. I can clearly see God is at work and we are the people that are accepting a new future sharing God's love and accepting his love with time and challenges to work together as one body in Christ himself. The building has found new life through its use by Lutheran Social Services in Iowa (LSI). Speaking with them and seeing the need for development and watching them grow makes me smile that this building is helping and serving others. LSI provides services for mental health therapy, behavioral health for youth, parental support and early childhood resources, services for people with disabilities, refugee and immigrant services such as housing, food, clothing and personal needs, and is working to resettle many Afghan refugees.

Today I am focusing on outside of the walls of St. Thomas' and discovering the task that has been presented to us on how to broaden outreach and communications to

the surrounding communities and be aware of the needs of others. I am continuing my spiritual journey by sharing God's love and my devoted faith in the Lord and living by the scriptures in the Bible through God's blessings with a kind and caring heart.

Everyone in the congregation of Calvary helped and worked together in sharing God's love and making it a beautiful worship place that we are very proud and sentimental of, and we remain devoted servants of God. Keeping that in our

hearts, God gives us grace, strength, and blessings to move on to another challenge for the mission to which we have been called.

Proverbs 3: 5-6 "Trust in the Lord with all thine heart; and lean not unto thine own understanding. In all thy ways acknowledge him and he shall direct thy paths."

*Ms. Suzanne M. (Houts) Berry is a member of St. Thomas', Sioux City and was a member of Calvary, Sioux City from 1959-2023.*

---

All good things must come  
to an end. It is time to  
accept God's challenge and  
bring in the new changes  
for this building while  
we move on to our new  
endeavors and look forward  
to the future.

---

- Kelly Houts

# Join us for the 33rd Annual Summer Ministry School & Retreat



## FUN, LEARNING, AND WORSHIP

For over 30 years Episcopalians in Iowa have gathered for a weekend in the summer to learn church leadership skills, explore personal spirituality, or just find Sabbath time. Praying together sets a rhythm and tone for the weekend that culminates in Eucharist on Sunday morning. During the weekend, 8 hours are set aside for “track time” to get in-depth study in one track topic of your choice (track offerings change each year), or choose to do a solo retreat. Spend time catching up with friends and making new ones during meals and morning and evening social times, and enjoy free time built into the weekend’s schedule to socialize, rest, or do an activity. Come join us!



- **Location:** Grinnell College
- **Dorm Living:** air-conditioned
- **Golf Cart Transportation:** provided between dorms and the building where activities & meals are located
- **Meals:** buffet style and delicious
- **Cost:** will not be more than \$249.00 per adult for the whole weekend, and a la carte pricing can further reduce your cost.
- **Registration Deadline:** June 9th

## LEARNING TRACKS:

Choose one "Track" to focus on for the weekend -- you'll spend 8 hours of "Track time" in groups of 4-12 people who are just as passionate about the topic as you are, guided by knowledgeable Track leaders who'll delve into the chosen topic. Some Tracks require advance reading, some don't, some tap into your creativity, all are designed to help you find new ministry or renew you for the ministry you are already doing. Each year, the list of Tracks contains a wide variety of topics from Bible Study, to Church Leadership to Personal Spiritual Development. You can even choose the Solo Retreat Track option if you want to pursue your own interests.



*Pg. 14 & 15 photos from 2022 Summer Ministry School & Retreat; Photos by T. Rubland Petty & A. Mellies*



## CHILDREN & YOUTH:

### Through 5th Grade:

Childcare will be available during track times. This is not a programmed time, but will be time for kids to play and build friendships with other kids across the diocese.

### Entering Grades 6-12:

Attend with your family, and you're welcome to join any numbered track where you'll be treated like an adult.

*Parents/guardians need to inform the Youth Missioner of their plans for their child(ren) during their scheduled track times.*



## WEEKEND SCHEDULE

### Friday June 23

- 2:00pm-7:00 REGISTRATION CHECK-IN
- 5:30pm-6:15 Dinner
- 6:30pm-6:45 Welcome & Orientation
- 7:00pm-8:15 GATHER IN TRACK GROUPS
- 8:30pm-9:00 Night Owl Social Time

### Saturday June 24

- 6:45am-7:30 Early Bird Social Time
- 7:30am-8:00 Morning Worship
- 8:00am-8:45 Breakfast
- 9:00am-11:30 GATHER IN TRACK GROUPS
- 11:40am-Noon Noonday Prayer
- 12:00pm-12:45 Lunch
- 1:00pm-4:00 FREE TIME
- 4:00pm-5:45 GATHER IN TRACK GROUPS
- 6:00pm-6:45 Dinner
- 7:00pm-8:00 GATHER IN TRACK GROUPS
- 8:15pm-8:45 Evening Worship
- 9:00pm Night Owl Social Time

### Sunday June 25

- 6:30am-7:30 Early Bird Social Time
- 7:30am-8:00 Morning Worship
- 8:00am-8:45 Breakfast & Check-out
- 9:00am-10:30 GATHER IN TRACK GROUPS
- 10:45am-Noon Holy Eucharist
- Noon-12:45pm Lunch

## 2023 TRACK OPTIONS

*Full track descriptions available online*



### STRENGTHENING CONGREGATIONS

#### 1: Transformative Worship in the Absence of a Priest

*The Rt. Rev. Betsey Monnot*

This workshop is especially designed for worship leaders in congregations that worship without a priest on a regular basis. We will share tools, discussion, and practice in designing worship that can be transformative and deepen our connection to God.

#### 2: Nurturing Spiritually Vital Congregations

*The Rev. Canon Meg Wagner*

Regardless of the size of your church, how can it be spiritually vital? This track will feature a mixture of practical ideas, spiritual exercises, and planning tools to help your congregation take the next step in spiritual growth.

#### 3: What is a Deacon?

*The Ven. Judith Crossett & the Rev. Pat Johnson*

Join us in exploring the diaconate, including discerning call and formation. This track is designed both for anyone who may be discerning a call and also for those who are simply curious. Bring all your questions, thoughts, and open hearts.

### SUPPORTING CLERGY & LAY LEADERSHIP

#### 4: Church Office Administrator Retreat

*Ms. Elizabeth Adams & Ms. Tina Austin*

When was the last time the church administrator had a retreat? This gathering of administrative assistants from the Episcopal churches in Iowa is simply that. Wear comfortable clothes and bring your knitting, coloring, crocheting or another small relaxing activity with you!!

#### 5: Ministry Amid the Eldering Process

*Mr. Bob Sessions & the Rev. Stacey Gerhart*

During this track, we'll examine the spirituality of aging, the eldering process, understand the changing role/purpose of this stage of life and use those understandings to find purpose in the life-cycle of the church. We'll also connect you to resources on the spiritual, moral, and practical dimensions of becoming an elder.

### DEEPENING OUR CONNECTION TO GOD

#### 6: In Times Like Ours: Prophets Speak Today

*The Rev. Jean McCarthy*

Where is it that we find our hope and courage to step out on a path forward during times of great lament? We will explore the Hebrew prophets and the prophetic voices today to seek that path, both individually and as a community.

#### 7: Deepening Our Connection to God Through Art and Storytelling

*Ms. Alescha Caldwell*

This track will explore deepening our connection to God through storytelling and art. You can paint, draw, doodle anything that draws you closer to God. There is no prerequisite for ability.

#### 8: Into the Oneness

*The Rev. Catherine Quehl-Engel*

Cultivate ways of consciously communing with The Sacred, and living life with greater flow, surrendered trust, and ease. We'll practice easy to learn Qigong, yogic sleep guided meditation, radiant heart meditation, and the soothing sound and vibration of singing bowls.

#### 9: Spiritual Direction\*/Solo Retreat

*Ms. Helen Keefe & the Rev. Mary Jane Oakland*

Keefe and Oakland are on-hand during the first and last track time to help open and close your self-directed retreat, including giving an overview of spiritual direction and helping you design your solo retreat. We encourage you to schedule one-on-one spiritual sharing sessions with one of them during the weekend, and do the rest of the weekend at your own pace.

*\*the time with Mary Jane and Helen is optional - you may still do the solo retreat completely solo or join any parts that will be helpful to you.*



SUMMER MINISTRY  
SCHOOL & RETREAT  
[www.iowaepiscopal.org/smsr](http://www.iowaepiscopal.org/smsr)



# Religious Life: A Resource for All

by Kevin Goodrich

“Religious life” is a term with specific meaning within the historic and present-day church. It refers to those who have taken vows in a Christian community, often known as an order. Members of such orders and communities are sometimes known as religious. Not in the general sense of that term used as an adjective to describe someone with religious beliefs or piety, but in the more specific sense of that term, used as a noun, to refer to people who’ve

the largest examples of this kind of order, and while it’s not specifically an Episcopal order, many Episcopalians are members of TSSF. These dispersed orders adapt the traditional vows and practices of residential religious life to the situations of individuals who have families, jobs, and other obligations. To join these expressions of religious life you don’t have to give up everything and live in a convent.



*Members of religious communities in The Episcopal Church; Photo from [religiouslifesunday.org](http://religiouslifesunday.org) public promotion materials*

made vows within an order. The Episcopal Church and Anglican Communion have many religious orders, some with counterparts in the Roman Catholic Church. For example, there are both Episcopal and Roman Catholic Franciscans. Some orders or communities do not have counterparts in the Roman Church, such as the Order of Julian of Norwich—an Episcopal order of contemplative nuns.

Traditional religious life is the vowed life of monks and nuns, friars and sisters, living in residential community, and usually taking vows of poverty, chastity and obedience. The Episcopal Church has such residential communities. In recent decades many other expressions of religious life have emerged, with some orders being dispersed in nature and including married as well as single people. The Third Order of the Society of St. Francis Assisi (TSSF) is one of

The percentage of Episcopalians involved in religious life either as vowed religious or as an affiliate (sometimes called an oblate or associate) of an order is pretty small. However, the influence of religious life on The Episcopal Church and wider Anglican Communion is outsized for several reasons. For example, the Book of Common Prayer bears the marking of religious life,

with its emphasis on the recitation of the Daily Office (Morning Prayer, Noonday Prayer, Evening Prayer, and Compline). A daily, liturgical, and scheduled cycle of prayer in common has been a hallmark of religious life for centuries. In addition, many devout lay persons and priests have found spiritual direction, insight, teaching, and refreshment by interacting with religious orders, often by going on a retreat at a residential community.

Also, for a long time if you wanted to learn about classic models of

---

**"...many Episcopalians continue to find their life with God nurtured by interactions with religious orders, either virtually, in-person, or in-print."**

---

## Religious Life: A Resource for All, *continued*

spirituality and prayer, you'd often find yourself at a monastery. Thanks to the 20th century lay revival of spiritual direction across Christian denominations this is no longer a requirement. However, many Episcopalians continue to find their life with God nurtured by interactions with religious orders, either virtually, in-person, or in-print. Bishop Betsey Monnot has spoken of the role that the Episcopal monks of the Society of St. John the Evangelist in Boston, Massachusetts, have played in her own formation. Further, she has partnered with Brother James Dowd with The Benedictine Way community in Nebraska to bring contemplative prayer workshops across our diocese. Religious life is a wonderful and often underutilized resource for you, your congregation, our diocese, and the whole church. This is true whether or not you sense a calling to affiliate or join a religious order. I encourage you to invite a member of a religious order to speak to your church or group, to learn more about religious life, and to consider how it may help nourish and grow your relationship with God.

*The Rev. Kevin Goodrich, who holds doctoral degrees in spirituality and theology, is a vowed friar in the Anglican Order of Preachers (also known as "The Dominicans") and serves as rector at St. John's Episcopal Church in Dubuque, IA.*

Are you a member of or interested in religious life in our diocese? Contact Father Goodrich with questions and/or to be part of the "religious life network" of our diocese. This group will encourage one another in our shared commitments and support our wider diocesan family through prayer and other activities.

Email: [FatherGoodrich@StJohnsdbq.org](mailto:FatherGoodrich@StJohnsdbq.org)



### Calling Young Adults!

Applications are open to young adults, ages 18-30, for our Companions Pilgrimage in Iowa  
**AUGUST 8-17**

Get to know fellow young adults from the Diocese of Brechin in Scotland, the Diocese of Swaziland in Eswatini, and the Diocese of Iowa as we spend time together learning, exploring, and having fun!

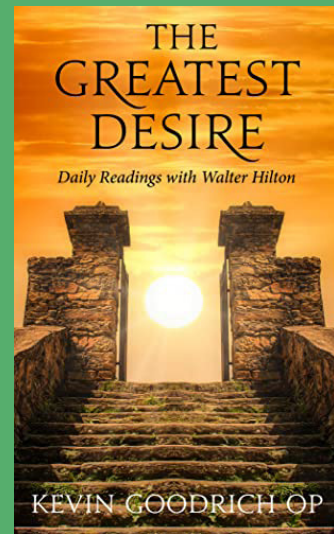


[iowaepiscopal.org/young-adult](http://iowaepiscopal.org/young-adult)

## Experiencing God Through the Wisdom of the Mystics

Fourteenth-century mystic Walter Hilton was well known in the Middle Ages as a gracious and insightful spiritual guide. He was a canon lawyer who gave up a promising career to devote himself to a life of prayer and of guiding others into the depths of the Spirit. He was a best seller in medieval England, read not only by monastics and clergy, but by women and men with families and responsibilities in the world. Reading Hilton can help individuals kindle the fire of their faith to burn more brightly and to experience God more nearly.

The Rev. Kevin Goodrich, a vowed friar in the Anglican Order of Preachers (also known as “The Dominicans”) and rector of St. John’s Episcopal Church in Dubuque, IA recently edited a devotional volume of Walter Hilton’s writings entitled, “The Greatest Desire: Daily Readings with Walter Hilton.” In this little book, readers will discover “bite-size mysticism” that is a very accessible entry point into some of the church’s ancient wisdom on prayer, spirituality, and connecting with God. Intended for devotional use, many readers choose to meditatively read one page a day. These short readings may help to deepen your prayer life and to bring you into closer relationship with God.



“Walter Hilton's generous love of God and people is a lost treasure now uncovered to inspire our restless age with timeless spiritual insights and wisdom.



- Book endorsement by the Very Revd Nicola Sullivan,  
Dean of Southwell Cathedral in the United Kingdom

**FALL & SPRING**



## CARE PACKAGES

**FOR RECENT HIGH SCHOOL GRADUATES**

**IF YOU KNOW A YOUNG ADULT IN THIS LIFE STAGE WHO MIGHT LIKE ONE, CONTACT:**

**AMY MELLIES**  
AMELLIES@IOWAEPISCOPAL.ORG

# GILEAD Grants Inspire Ministries

APPLICATIONS OPEN  
MAY 15 - JULY 15, 2023

by Traci Ruhland Petty

GILEAD (Growing Iowa Leaders, Engaging All Disciples) grants are available to support and equip leaders, congregations, ministry initiatives, and worshipping communities to thrive into the future. Grants are funded from the GILEAD Campaign, which was a 3-year diocesan fundraising campaign ending last year. The campaign grew out of some cool things that happened around the diocese from 2017-19 – many of you may remember the Revivals, Growing Iowa Leaders and Engaging All Disciples Days – congregations near to each other got together for these events and there were a bunch of different activities, guest speakers, leadership development opportunities, which all built on each other and we realized a need to be able to fund more of these types of offerings. And so, the GILEAD Campaign was formed, and it has funded 42 inspiring and innovative grant projects over the past 3 years. Because of your generosity, we are able to make grants available this year and next as well.



Do you have an idea for: a new project or ministry? reaching people in new places or in new ways? growing an existing ministry? If so, you may be eligible for a grant.

Make sure you schedule a time

to meet with a few members of the GILEAD Grant Review Committee to discuss your idea before you submit an application; they'll help you think through your idea so you can put forward the strongest application possible. It's a friendly process, so don't be intimidated if you haven't written a grant before, we're here to help!

*Ms. Traci Ruhland Petty serves as the diocesan Missioner for Communications & GILEAD.*

## \*NEW THIS YEAR:

See all available times and book your appointment with the GILEAD Grant Review Committee online

### 3-YEAR RECAP:

2022:	10 grants awarded, Totaling \$79,000
2021:	18 grants awarded, Totaling \$136,500
2020:	14 grants awarded, Totaling \$85,526

## WHO CAN APPLY?

Congregations, worshipping communities, chapters, or individual members of the Diocese of Iowa may apply for GILEAD funds. Partnerships with non-Episcopal entities are welcome and encouraged, but an Episcopal entity must serve as the reporting agent and the project leader must be an Episcopalian who is a resident in the Diocese of Iowa.

## GRANT CATEGORIES:

- Beginning a New Worshipping Community
- Beginning a New Ministry or Strengthening an Existing One
- Liturgical Space Renewal
- Support for Recently Ordained Clergy
- Formation for Youth or Young Adults
- Leadership Development
- Evangelism
- Expanding Tools and Technology

## LEARN MORE:

[iowaepiscopal.org/gilead-grants](http://iowaepiscopal.org/gilead-grants)

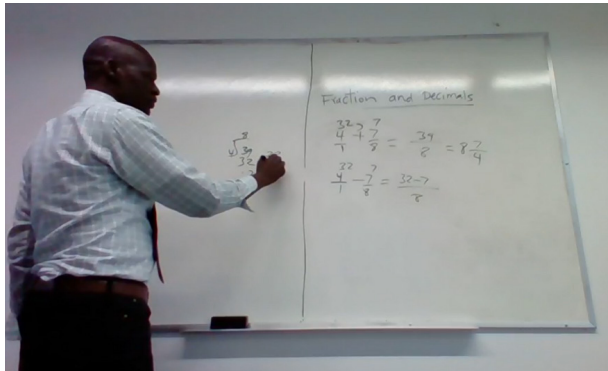


# ACI Refugee and Immigrant Community Learning Classes

## with St. Anne's, Ankeny

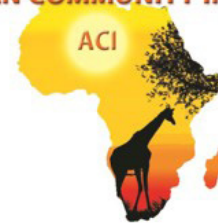
2022  
GILEAD  
GRANT  
RECIPIENT

\$5,000



*Dhoal Larjin teaching fractions. Video screenshot.*

AFRICAN COMMUNITY INSTITUTE



### BEGINNING A NEW OR STRENGTHENING AN EXISTING MINISTRY

African Community Institute (ACI) is a non-profit that seeks to increase the educational skills of refugees and immigrants by providing citizenship, language, and tutoring services/workshops. This project will help fund needed tutors/trainers and materials for the services and workshops they offer. Last year, ACI's tutoring program helped about 20 refugee and immigrant children and youth with math and other subjects; those students saw higher grades in math and other subjects like reading and writing, and turning in homework on time and with more correct answers; some of those students have gone on to enroll at Des Moines Area Community College (DMACC) and others have found employment. Additionally, ACI helped 15 people graduate from citizenship classes, and they've helped adults overcome other language and cultural barriers. In particular, ACI helps both youth and adult learners with ESL to help prepare them for citizenship classes, educational and employment opportunities, and general life skills. ACI is partnering with St. Anne's, which will help with space for activities, and continues to partner with the United Way, which helps sponsor some of the tutoring programs. GILEAD Grant funds will be used to help pay for tutors, trainers, and teachers, and for any needed learning materials for these services/workshops.

*Grant main contact: Mr. Dhoal Larjin is a vestry member at St. Anne's, Ankeny, and is the founder and president of African Community Institute.*

The ACI project helps me to do my math homework by myself.

- student

“

My children have improved a lot with math and their homework. I will bring them every week for the math class.

-mother of a student



# Behavioral Health Ministry Team

in partnership with the Rev. Kris Leaman & Ms. Amy Mellies

### BEGINNING A NEW OR STRENGTHENING AN EXISTING MINISTRY

Last year, a GILEAD Seed Grant helped fund the forming of a diocesan Behavioral Health Ministry Team (BHMT). The team is composed of clergy, laity and community advisors in the fields of mental health, and works to identify, support, and lend assistance to clergy, congregations, families and all those in between with mental health needs. BHMT is committed to building a support system and referral resources for all in the diocese, and thus worked to build partnerships with mental health organizations such as L.E.A.D. (Let's Empower, Advocate, & Do), Mindspring Mental Health Alliance, NAMI of Central Iowa, and Mind & Spirit Counseling Center. With this grant, BHMT hopes to strengthen their ministry by expanding outreach opportunities, partnerships, and trainings/educational workshops. GILEAD Grant funds will be used to help cover the cost of offering and/or participating in trainings and educational workshops, consultation fees with partner organizations, and other materials/educational resources.

*Grant main contacts: the Rev. Kris Leaman serves as rector at St. Mark's, Fort Dodge; Ms. Amy Mellies serves as the diocesan Missioner for Children & Youth.*



“  
There are people in our communities that need someone to see [notice] them.  
- Mental Health & the Bible Lent Study

# Refugee Garden

## with St. Andrew's, Des Moines

2022  
GILEAD  
GRANT  
RECIPIENT

\$5,000

BEGINNING A NEW OR  
STRENGTHENING AN EXISTING MINISTRY

Lutheran Services in Iowa's Global Greens program works to reconnect former refugee farmers with the land as they build a new life in the U.S., and they have a list of over seventy refugees looking for garden space. After several months of research and discussion with LSI, St. Andrew's partnered with LSI to turn a large, rarely used plot of St. Andrew's land, just east of their parking lot, into a garden. The garden fills a need within the growing refugee population for garden space and serves as a joyful expression to the neighborhood of use of space and support for others at a basic level. LSI selects gardeners to whom the plots are assigned and monitors to assure their usage of the plots, as does St. Andrew's. The Dinka and Darfur communities associated with St. Andrew's were also extended invitations to participate. After the initial tilling and layout of the garden, each gardener or family is responsible for the planting, watering, and maintenance of their plot. St. Andrew's is responsible for providing access to water, fencing and a wheel barrow, along with mowing the lawn surrounding the garden, scenic landscaping, and potentially small seating area(s). Currently, water tanks are on loan from LSI until St. Andrew's can find a more permanent solution, and permanent fencing is needed. GILEAD Grant funds will be used towards the placement of a closer and ongoing water source and lumber to begin construction on permanent fencing.

*Grant main contact: Ms. Deb Brewer-Cotlar is a member at St. Andrew's, Des Moines.*

“ The benefits of reconnecting these refugee gardeners to the land goes beyond increased food security and self-sufficiency to improved physical and mental health, reconnection and passing along of agricultural heritage for younger generations, as well as community integration.



2022  
GILEAD  
GRANT  
RECIPIENT

\$5,000

# ThreeHouse Campus Ministry: The Listening Post

with St. Luke's, Cedar Falls



Oftentimes they don't need more than a moment of reassurance; they simply need to be loved.

-the Rev. Elizabeth Duff Popplewell

### BEGINNING A NEW OR STRENGTHENING AN EXISTING MINISTRY

St. Luke's Episcopal Church, Cedar Falls, in partnership with ThreeHouse Collaborative Campus Ministries and other collaborating congregations, seeks to grow their ministry capacity with students and faculty at the University of Northern Iowa (UNI), which includes being an active presence on campus, and to deepen their own faith and ability to follow in the ways of Jesus. The campus community longs to be seen and heard in a safe and welcoming space with no stipulations or limitations. Through campus and community conversations and in collaboration with UNI's Counseling Center, they have identified an increasing need for providing safe and welcoming listening spaces in which people can share their experiences of isolation, transitions, discernment, struggles, and joys. They believe a way to meet this need is through a project called The Listening Post, a regular and consistent space on campus staffed by trained volunteers from our collaborative churches who will engage in active listening, offer compassion, and provide resources on campus and in the community for individuals to connect with. The UNI Counseling center will provide volunteer training (Mental Health Ally program and Question Persuade and Refer program training) as well as serving as an on-campus referral resource. In addition, the UNI Gender and Sexuality Services Office

will provide Safe Zone Ally training and the UNI Military and Veterans Services Office Green Zone Ally will provide training to all designated listeners. Through this training, every designated listener will be able to provide pastoral care as well as be able to connect individuals with applicable resources. GILEAD Grant funds will help provide necessary training for volunteers, in order to equip them to provide the best support they can for those who stop by The Listening Post. It will also be used to purchase supplies, print resources, and obtain marketing materials.



Trained volunteers staffing The Listening Post ministry on UNI's campus.

Grant main contact: the Rev. Elizabeth Duff Popplewell serves as rector at St. Luke's, Cedar Falls



# Clergy Support at St. Andrew's, Des Moines

2022  
GILEAD  
GRANT  
RECIPIENT

\$24,000

## SUPPORT FOR NEWLY ORDAINED CLERGY

St. Andrew's has embraced mutual ministry through a team-based ministry structure and established many new relationships that have led to ministry partnerships. The Rev. Lizzie Gillman has been an integral part of Mutual Ministry to bring St. Andrew's into a post-pandemic world, building intentional relationships with the community, city, and organizations, helping to chart an innovative, sustainable course for the congregation. She's built a partnership with the Northwest Community fridge, which led to St. Andrew's housing the fridge on their property when the fridge was forced to relocate; she's worked with Deacon Eve Mahr to form a relationship with Lutheran Services in Iowa (LSI), which has led to St. Andrew's becoming a site for LSI's Global Greens garden program for refugees; she takes an active role in community events, including City Council meetings, Neighborhood Association meetings, vigils at the Des Moines police station [photo bottom right], serves as a Courtroom Chaplain to support families (several defendants were charged with crimes connected to Black Lives Matter protests), and more. Gillman's work has laid the foundation upon which St. Andrew's can continue to build, but there is more work to be done. GILEAD Grant funds will be used to help pay Gillman's salary and benefits.



“Lizzie is excellent. She gives me candy and makes me feel welcome.”

*Grant main contact: Ms. Leanne Williams serves as senior warden at St. Andrew's, Des Moines.*

“Lizzie makes me feel safe.”



2022  
GILEAD  
GRANT  
RECIPIENT

\$15,000

# Clergy Support

## at St. Matthew's, Iowa Falls



### SUPPORT FOR NEWLY ORDAINED CLERGY

St. Matthew's for all of its history of over one hundred years has been a mission congregation. For the past forty years it has always relied upon part-time or visiting clergy. As the availability of visiting clergy became scarce, they began searching for alternatives and also realized the need to have a larger presence in the community to help them grow and prosper. They hope to find an enthusiastic, recently-ordained priest who will become a community presence, can help with the rejuvenation and diversification of St. Matthew's membership, a raising of its profile in the community, and for the spreading of the Gospel to the rapidly diversifying population of Iowa Falls and surrounding area. GILEAD Grant funds will be used to help fund the salary of the clergy person, which will in turn help grow the congregation and build a wider presence in Iowa Falls and the local community.

We believe that we, and the recently ordained person whom we call, will all be successful if we base our joint efforts on building our faith in Christ Jesus, using our God-given reason, talents and skills, and appreciating our time-tested Episcopal liturgy, history, and traditions.

*Grant main contact: Mr. Harvey Nicholson serves as senior warden at St. Matthew's By-the-Bridge, Iowa Falls.*



# Electronic Sign at St. Stephen's, Newton

2022  
GILEAD  
GRANT  
RECIPIENT

\$5,000

## EVANGELISM

St. Stephen's lighted church sign is over 30 years old and is not repairable. It has been used to spread information about St. Stephen's events, 12 Step Group events, and ecumenical events involving the other eight (8) churches in a four-block area of St. Stephen's (i.e., the Christmas Church Walk and Carol Sing, and the Stations of the Cross at Easter). Additionally, Biblical quotations are on the sign in an attempt to spread the Gospel of Christ. They are proposing a new, electronic sign that will be computer generated and thus can carry far more information and convey it in a more noticeable manner. Many from the groups meeting at the church and from the general public have commented that "they miss the messages and information from the sign." St. Stephen's has already spoken with several of the 15-16 12 Step Groups that use the church on a weekly basis, and they are eager to have a sign that helps spread the word about their offerings; the 12 Step and other groups that use St. Stephen's will have input into using the sign. GILEAD Grant funds will be used to purchase the sign and computer program and other necessary installation components (i.e., a base/brick enclosure, electrician and installation expenses).



*Grant main contact: Ms. Rita Baker serves as senior warden at St. Stephen's, Newton.*

“

[We] have spoken to some of the 12 step groups about being able to get their meeting times out there so they're excited for the sign.

-Rita Baker



# Safety Net for Service Corps Participants

in partnership with **Tiffany Farrell**

“

Oh my goodness!  
What a generous offering!

- Wendy Karr Johnson,  
Program Manager for ESC

## LEADERSHIP DEVELOPMENT

In an effort to keep the connection between the church and young adults, this project intends to provide safety net funding to young adults involved in service year programs (ex. Episcopal Service Corps, Young Adult Service Corps, AmeriCorps). Programs tend to provide minimal monthly stipends to its corps members; when emergencies arise, or gas prices are high and you are moving across the country, money can become tight. Small stipends can also prevent young adults from traveling home for the holidays or special events. Having recently completed a year of service with the Episcopal Service Corps, this grant's project leader learned more about the structure and support systems offered and not offered through such programs. Although service years encourage simple living, the monthly stipends do not cover all expenses for many in these programs. This makes this opportunity less accessible for those who are already vulnerable to financial struggles. With programs covering the globe, even traveling to the program can create a barrier. Having funds available to help with these necessary but unforeseen or uncovered expenses may

encourage young adults who are unsure of whether or not they can afford to serve to go ahead knowing that there is a safety net provided to them from the diocese. Corps members would be able to fill out an application to use funds for a wide variety of reasons, such as (but not limited to): travel expenses, car repairs, medical bills, moving expenses, etc. GILEAD Grant funds will be used as this “safety net” funding for corps members, available to corps members upon application approval.



*Grant main contact: Ms. Tiffany Farrell is a member at St. Luke's, Cedar Falls.*

# Simpson Youth Academy Scholarships

in partnership with Rev. Eric Rucker

2022  
GILEAD  
GRANT  
RECIPIENT

\$5,000

## FORMATION FOR YOUTH OR YOUNG ADULTS

The Simpson College Youth Academy is a year-long, ecumenical program for Iowa high school youth grounded in the conviction that young people have gifts and power that are essential for the healing of the world now. Through college-level intellectual engagement, training in worship and prayer leadership, and reflective service around community issues, we help youth step into mature young adult Christian faith as they discern their particular callings as agents of justice in their churches and the world. The Academy requests a GILEAD grant to provide tuition scholarships for Episcopal youth, LGBTQ youth, and youth whose racial or economic status inhibit their ability to pay tuition for the program's summer residency. Scholarships for these populations address critical needs in our communities: first, the Episcopal Church in America is rapidly aging and shrinking, thus urgent, intentional investment in forming young Episcopalians is needed to sustain our church institution; second, American LGBTQ youth are faced with consistent marginalization at higher rates than non-LGBTQ youth by the general public and by religious communities; and third, this diocese is committed to acting tangibly to combat racial and economic injustice. Therefore, the Diocese and Academy's decision to offer financial assistance to such youth would be a prophetic statement of radical welcome for queer and BIPOC youth in the name of Christ. GILEAD Grant funds will be used to pay for scholarships and programming fees for four high school youth who are Episcopal, LGBTQ+, BIPOC, or economically disadvantaged to participate in the Simpson Youth Academy program for only \$100 per student.



*Grant main contact: the Rev. Eric Rucker serves as an assistant priest at St. Andrew's, Des Moines, and as director at Simpson Youth Academy.*



*Photos: Simpson Youth Academy participants; by E. Rucker*

[SYA] is so helpful and is creating young people who learn what to do with their desire to challenge injustices. SYA is making the world a better place and creating hope.

- 2022 participant



# African Community Institute Tools & Technology

with St. Anne's, Ankeny

### EXPANDING TOOLS AND TECHNOLOGY

In Polk county, about 2,000 refugees and immigrant adults and children do not have access to learning through technology because they do not have access to computers nor know how to use them. As the number of refugees and immigrants continues to increase, a solution is needed for this technology and skill gap. These technical barriers prevent adults from accessing higher learning and job opportunities and children are more likely to drop out of school and/or not seek further educational opportunities. African Community Institute helps children and adult refugees and immigrants with computer knowledge, and the technology also allows ACI to provide language classes, tutoring services, Bible studies, and other workshops. GILEAD Grant funds will be used to expand ACI's technology, including computers, printers, iPad, and laptops.

*Grant main contact: Mr. Dhoal Larjin is a vestry member at St. Anne's, Ankeny, and is the founder and president at African Community Institute.*

“  
The best thing that happens is the improvement of the refugee and immigrant children in the program because they are learning much better than before they got the ipads.”

“  
We have seen an increase in participation in math and ESL classes.”



# AROUND THE DIOCESE WITH BISHOP MONNOT

*Visitations since the winter 2022 issue of this magazine was published*



ST. JOHN'S, MASON CITY



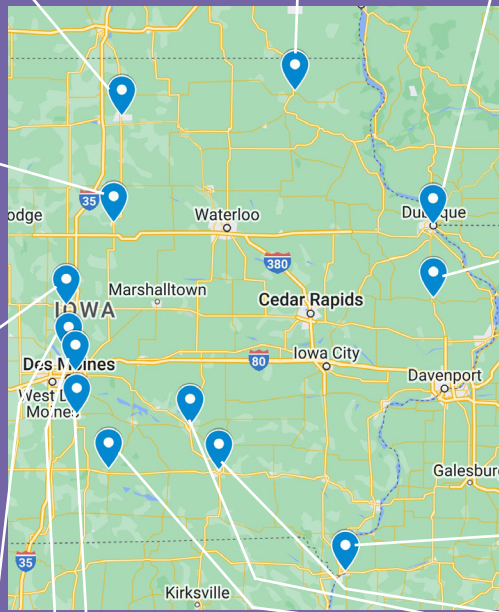
GRACE CHURCH, DECORAH



ST. JOHN'S, DUBUQUE



ST. MATTHEW'S BY-THE-BRIDGE, IOWA FALLS



ST. MARK'S, MAQUOKETA



ST. JOHN'S BY-THE-CAMPUS, AMES



ST. JOHN'S, KEOKUK



ST. ANNE'S BY-THE-FIELDS, ANKENY



ALL SAINTS, INDIANOLA



TRINITY CHURCH, OTTUMWA



ST. MARK'S, DES MOINES



ST. ANDREW'S, CHARITON



ST. JAMES', OSKALOOSA

# DIOCESAN CALENDAR

## BISHOP VISITATIONS

- May 21 St. Peter's Church, Bettendorf
- May 28 Trinity Cathedral, Davenport (Pentecost)
- June 4 Trinity Cush, Des Moines (Trinity Sunday)
- July 2 Grace Church, Charles City
- August 27 St. Alban's Church, Spirit Lake
- September 9 Regional Confirmation Service, St. Timothy's, West Des Moines
- September 10 St. Luke's Church, Cedar Falls
- October 8 Church of the Savior, Orange City
- October 15 St. Paul's Church, Council Bluffs
- October 29 St. James' Church, Independence
- November 5 Christ Church, Burlington
- November 12 Grace Church, Boone
- November 19 St. Paul's Indian Mission, Sioux City
- December 3 St. Thomas' Church, Algona
- December 10 St. Andrew's Church, Des Moines
- December 17 St. Luke's Church, Des Moines

### GET CONNECTED

#### Episcopal Diocese of Iowa

225 37th Street  
Des Moines, IA 50312

(515) 277-6165

[diocese@iowaepiscopal.org](mailto:diocese@iowaepiscopal.org)

#### eNewsletter:

Comes out monthly



*Bishop Monnot with (Below) acolytes at St. Anne's, Ankeny; (R) confirmands at St. James', Oskaloosa. Photos from B. Monnot*





# HIGHLIGHTS



## STAY CONNECTED

**Website:**  
iowaepiscopal.org

**Facebook:**  
IowaEpiscopal

**YouTube:**  
DioceseofIowa  
Communications

For the most up-to-date information, including the bishop's visitation schedule, upcoming events, resources, and more, visit the diocesan website.



## UPCOMING

GILEAD Grant Applications Open	May 15-July 15
Dismantling Racism Training	June 3
Zoom Open Office Hours with Bishop for Clergy	June 6
Underground Railroad Pilgrimage, SW Iowa	June 9-10
Summer Ministry School & Retreat	June 23-25
EPIC Youth Summer Camp	June 26-30
Episcopal Youth Event (EYE)	July 4-8
Iowa Episcopal Clergy Conference	July 27-29
Young Adult Companion Dioceses Pilgrimage	August 8-17
Fall Joint Chapter Meeting	August 26
Church Audits Due to Diocesan Office	September 1
Dismantling Racism Training	September 16
Deadline for Convention Delegate Certification	September 20
Iowa Episcopal Clergy Retreat,	October 5-7
Diocesan Annual Convention	October 21-22
Loneliness Workshop Series	October 28, November 11, November 25, December 9
Dismantling Racism Training	November 4

# 2023 Stewardship Share Report

1st QUARTER 2023 - AS OF MARCH 31, 2023

CITY	CHURCH	2023	2023	AMT DUE	RECEIVED	(OVER)
		ASK	COMMITMENT	3/31/2023	3/31/2023	UNDER
Algona	St. Thomas' Church	\$ 3,123.00	3,123.00	780.75	780.75	-
Ames	St. John's Church	41,706.00	41,706.00	10,426.50	-	10,427.00
Anamosa	St. Mark's Church	918.00	1,500.00	375.00	-	375.00
Ankeny	St. Anne's by the Fields	10,475.00	8,863.14	2,618.76	-	2,619.00
Bettendorf	St. Peter's Church	16,346.00	16,346.00	4,086.51	4,086.51	-
Boone	Grace Church	951.00	951.00	237.75	158.50	79.00
Burlington	Christ Church	29,678.00	21,000.00	5,250.00	3,500.00	1,750.00
Carroll	Trinity Church	3,782.00	3,782.00	945.51	3,782.04	(2,837.00)
Cedar Falls	St. Luke's Church	38,259.00	38,259.00	9,564.75	6,376.50	3,188.00
Cedar Rapids	Christ Church	43,968.00	43,968.00	10,992.00	9,828.00	1,164.00
Cedar Rapids	Grace Church	7,794.00	7,794.00	1,948.50	7,794.00	(5,846.00)
Chariton	St. Andrew's Church	2,256.00	3,000.00	750.00	3,000.00	(2,250.00)
Charles City	Grace Church	753.00	753.00	188.25	188.25	-
Clinton	Christ Church	18,276.00	18,276.00	4,569.00	-	4,569.00
Coralville	New Song Church	14,118.00	14,118.00	3,529.50	3,529.50	-
Council Bluffs	St. Paul's Church	2,870.00	3,600.00	900.00	900.00	-
Davenport	St. Alban's Church	9,858.00	8,874.00	2,218.50	2,218.50	-
Davenport	Trinity Cathedral	88,861.00	112,526.00	28,131.51	28,131.51	-
Decorah	Grace Church	3,806.00	3,806.00	951.51	951.51	-
Denison	Trinity Church	1,792.00	2,000.00	500.01	2,980.00	(2,480.00)
Des Moines	St. Andrew's Church	34,264.00	26,000.00	6,500.01	13,999.99	(7,500.00)
Des Moines	St. Luke's Church	32,048.00	13,106.00	3,276.51	2,184.34	1,092.00
Des Moines	St. Mark's Church	500.00	500.00	125.01	500.00	(375.00)
Des Moines	St. Paul's Cathedral	61,167.00	55,000.00	13,749.99	9,251.09	4,499.00
Des Moines	Trinity Cush	500.00		125.01	-	125.00
Dubuque	St. John's Church	24,176.00	10,000.00	2,499.99	-	2,500.00
Durant	St. Paul's Church	2,638.00	2,638.00	659.49	659.50	-
Emmetsburg	Trinity Church	862.00	862.00	215.49	215.49	-
Fort Dodge	St. Mark's Church	40,502.00	40,502.00	10,125.51	10,125.51	-
Fort Madison	St. Luke's Church	2,137.00		534.24	300.00	234.00
Glenwood	St. John's Church	1,466.00	1,466.00	366.51	488.68	(122.00)
Grinnell	St. Paul's Church	11,573.00	10,000.00	2,499.99	2,521.59	(22.00)
Harlan	St. Paul's Church	1,406.00	1,406.00	351.51	351.51	-
Independence	St. James' Church	1,782.00	1,782.00	445.50	445.50	-
Indianola	All Saints Church	539.00	539.00	134.76	179.68	(45.00)
Iowa City	Trinity Church	71,952.00	71,952.00	17,988.00	17,988.00	-
Iowa Falls	St. Matthew's By-the-Bridge	1,644.00	1,644.00	411.00	348.34	63.00
Keokuk	St. John's Church	15,934.00	7,200.00	3,983.49	1,200.00	2,783.00
LeMars	St. George's Church	500.00	500.00	125.01	145.60	(21.00)
Maquoketa	St. Mark's Church	2,596.00	2,596.00	648.99	432.66	216.00
Marshalltown	St. Paul's Church	6,796.00	6,796.00	1,698.99	1,132.66	566.00
Mason City	St. John's Church	22,078.00	20,430.00	5,107.50	5,107.50	-
Mount Pleasant	St. Michael's Church	3,871.00	3,871.00	967.74	967.74	-
Muscatine	Trinity Church	18,926.00	18,926.00	4,731.51	4,731.51	-
Newton	St. Stephen's Church	7,742.00	8,000.00	2,000.01	2,000.01	-
Orange City	Church of the Savior	2,607.00	1,300.00	651.75	-	652.00
Oskaloosa	St. James' Church	7,424.00	7,424.00	1,856.01	1,856.01	-
Ottumwa	Trinity Church	5,017.00	3,655.00	913.74	913.74	-
Perry	St. Martin's Church	6,883.00	6,883.00	1,720.74	-	1,721.00
Shenandoah	St. John's Church	4,920.00		1,230.00	-	1,230.00
Sioux City	St. Paul's Church	1,378.00	1,378.00	344.49	-	344.00
Sioux City	St. Thomas' Church	15,027.00	15,027.00	3,756.75	2,504.50	1,252.00
Spirit Lake	St. Alban's Church	10,654.00	10,654.00	2,663.49	2,663.49	-
Storm Lake	All Saints' Church	4,621.00	4,621.00	1,155.24	385.08	770.00
Waterloo	Trinity Church	8,199.00	8,199.00	2,049.75	2,829.46	(780.00)
Webster City	Church of the Good Shepherd	4,682.00	4,682.00	1,170.51	1,170.51	-
West Des Moines	St. Timothy's Church	68,998.00	57,000.00	14,250.00	9,500.00	4,750.00
<b>TOTAL</b>		<b>\$ 847,599.00</b>	<b>780,784.14</b>	<b>199,998.54</b>	<b>175,305.26</b>	<b>24,690.00</b>



*(A) Members from Calvary, now merged with St. Thomas', Sioux City, carrying on Easter hats tradition, Photo from S. Berry; (B) The Rev. Fred Steinbach (St. Andrew's, Chariton) visits with Sacred Heart Catholic church's youth group about local homeless ministry, Photo from F. Steinbach; (C) Companions in Ministry meeting; (D) Dismissal at Chrism Mass from Deacon Jeanie Smith (St. Timothy's, West Des Moines); (E) Easter Vigil at St. Paul's Cathedral, Des Moines; (C, D, E) Photos by T. Rubland Petty; (F) Board of Directors November 2022 Retreat; Photo by B. Monnot*



# EPIC SUMMER CAMP

4TH-12TH GRADE | JUNE 26-30, 2023  
CHRISTIAN CONFERENCE CENTER  
NEWTON, IA

All youth entering grades 4-12 (not limited to Episcopalians!) are invited to join us for an exciting week of activities including swimming, arts and crafts, Christian formation programs, nature hikes, star gazing, campfires, and s'mores—all led by caring and professionally trained staff!



\$375 per camper. Scholarships are always available.  
Learn More & Register: [iowaepiscopal.org/children-youth](https://iowaepiscopal.org/children-youth)